

Project EduSenNet

Survey among EFOS member institutions

February 2014 – April 2015



Dr. Katarina Grunwald, Bratislava (Slovakia); Dipl. Ing. Peter Hug, Groningen (Netherlands)

Simultaneously with the application for the EduSenNet project EFOS started in the spring of 2014 a survey among its members about the present situation in the education of older people. After the start of EduSenNet in December 2014 the collection of data was completed, compiled and evaluated. The result is displayed below. The interested reader might like to compare these results with those of a previous, similar survey that EFOS held in 2007 (see EFOS News 2007 Nr. 1).

The results of the present survey form the basis for the further activities in the context of the EduSenNet project. A possible second survey among EFOS members, focused on key aspects of future developments in the education for older people, is under discussion. Further results of EduSenNet will be published in future editions of EFOS News.

Evaluation

Respondents:

EduSenNet partners

- Comenius University in Bratislava / Centre for Continuing Education (Slovakia)
- Uppsala Senioruniversitet (Sweden)
- Otto-von-Guericke-Universität, Magdeburg (Germany)
- Seniorenkolleg an der TU Chemnitz (Germany)
- Senioren Academie Groningen-Friesland-Drenthe, Groningen (Netherlands)
- University of the Third Age - Brno University of Technology, Brno (Czech Republic)
- Universidad Permanente, Alicante (Spain)

Other EFOS members

- Uniwersytet Wroclawski, Uniwersytet Trzeciego Wieku, Wroclaw (Poland)
- Österreichische Hochschülerinnen- und Hochschülerschaft Karl-Franzens-Universität Graz (Austria)
- EFOS, Wien (Austria)
- Freunde und Förderer der Dresdner Seniorenakademie Wissenschaft und Kunst, Dresden (Germany)
- Berliner Akademie für weiterbildende Studien e.V., Berlin (Germany)

Section A, questions 1 to 4

Partners EduSenNet

| | <i>Slovakia</i> | <i>Sweden</i> | <i>Germany</i> | | <i>Netherlands</i> | <i>Czech Republic</i> | <i>Spain</i> |
|---|--|---|---|--|---------------------------|------------------------------------|--------------------------------|
| | Bratislava | Uppsala | Magdeburg | Chemnitz | Groningen | Brno | Alicante |
| Established in (year) | 1990 | 1979 | 1993 | 1993 | 1986 | 2000 | 1999 |
| Name & role of respondent | Nadja Hrapkova, Methodologist of the University of the Third Age | Björn Odin - Member of the international group of USU | Olaf Freymark, wissenschaftl. Mitarbeiter | Roland Schöne, manager | Peter Hug, senior student | Lenka Shromazdilova, administrator | Concepción Bru Ronda, Director |
| How do you define 'older student'? | 40+, 50+, secondary education | above 58 | above 40 | above 65/67, seniors college open for all ages | above 50 | Above 50, secondary education (?) | above 50 |

Other EFOS members

| | <i>Poland</i> | <i>Austria</i> | | <i>Germany</i> | |
|---|---|--|---------------------------------|---|---|
| | Wroclaw | Graz | Wien | Dresden | Berlin |
| Established in (year) | 1976 | 1945 | 1994 | 1994 | 1985 |
| Name & role of respondent | Alexander Kobylarek, manager | Rosemarie Kurz, Referentin für Generationen-fragen | Herta Spitaler, Seniorstudentin | Stefan Ritter, Rosemarie Becker, Geschäftsführ. Vorstände | Traugott Klose, Vorsitzender |
| How do you define 'older student'? | No age limit (?) Studying, learning or formally assisting with lectures | Women above 40, Men above 45 | Women above 40, Men above 45 | above 65 | Older citizens, interested in further education |

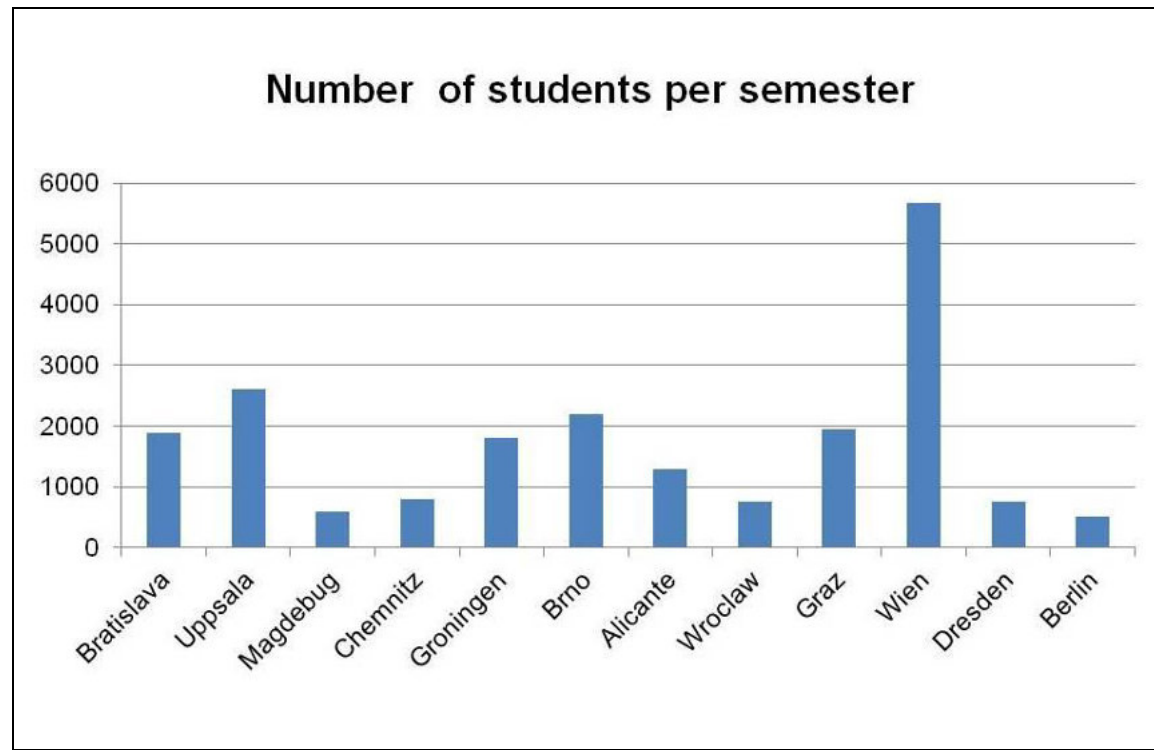
- We see a wide variety in organisations for academic education for older people.
- The definition of an 'older student' varies also quite a bit, with (lower) age limits from 40 to 65. Remarkable is the differentiation in starting age for women (40) and men (45) in Graz and Wien. Wroclaw and Berlin don't apply any age limit. Chemnitz stipulates an age limit but doesn't apply it in practice.

Section B
Questions 5 and 6

| | <i>Slovakia</i> | <i>Sweden</i> | <i>Germany</i> | | <i>Netherlands</i> | <i>Czech Republic</i> | <i>Spain</i> |
|--|---|-----------------------|-------------------------------|-----------------------------------|--|-------------------------------|---------------------|
| | Bratislava | Uppsala | Magdeburg | Chemnitz | Groningen | Brno | Alicante |
| Part of or linked to a university /higher education institution | Full part | Linked | Full part | Full part | Linked | Linked | Full part |
| Name of university/ institution | Comenius University in Bratislava / Centre for Continuing Education | University of Uppsala | Otto-von-Guericke-Universität | University of Technology Chemnitz | Rijksuniversiteit Groningen, Hanzehogeschool Groningen, Stenden Hogeschool | Brno University of Technology | University Alicante |
| Number of fulltime/parttime students per semester | PT 1887 | PT 2600 | PT 586 | PT 800 | PT 1800 | PT 2201 | PT 1300 |

| | <i>Poland</i> | <i>Austria</i> | | <i>Germany</i> | |
|--|----------------|----------------|-------------|----------------|---------------|
| | Wroclaw | Graz | Wien | Dresden | Berlin |

| Part of or linked to a university /higher education institution | Full part | Linked | Linked | Linked | Linked |
|--|------------------------|--------------------------------|--|---|--|
| Name of university/ institution | Uniwersytet Wroclawski | Karl-Franzens Universität Graz | Alma Mater Rudolphina – Universität Wien | Technische Universität Dresden, Musikhochschule Carl Maria von Weber, Deutsches Hygienemuseum, Staatliche Kunstsammlungen. Research centresHelmholtz, Max Planck a.o. | Freie Universität Berlin, Humboldt-Universität zu Berlin, Technische Universität Berlin, Universität der Künste Berlin |
| Number of fulltime/parttime students per semester | FT 765 | FT/PT 1957 | FT 5582 PT 96 | PT 750 | PT 500 |



- All institutes have a link of some sort with one or more universities and/or other institutes for higher education. Only the UTAs of Wroclaw, Magdeburg, Bratislava and Alicante are an integral part of the university.
- Only Wroclaw, Graz and Wien state that they have fulltime students. In Graz and Wien these fulltime students carry out a regular academic study. In Wroclaw they attend special courses for seniors.
- Wien has by far the most senior students, but the majority of them are between 40 and 55 years old

Question 7**Age range**

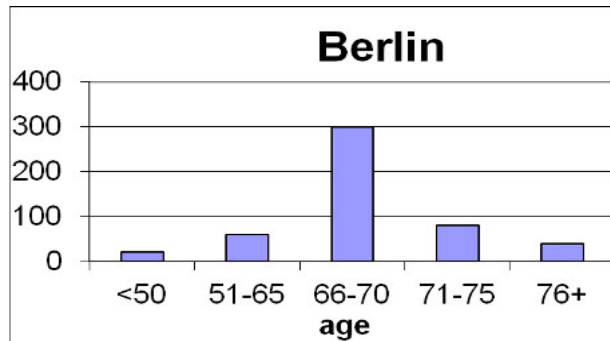
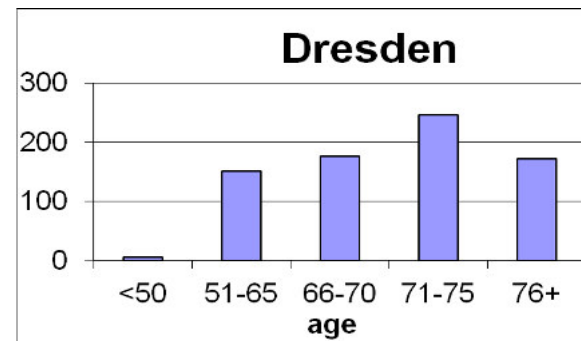
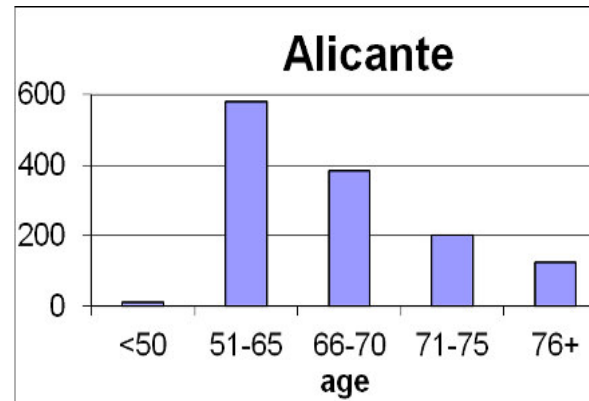
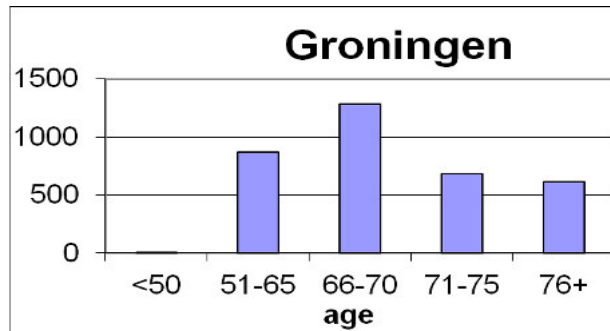
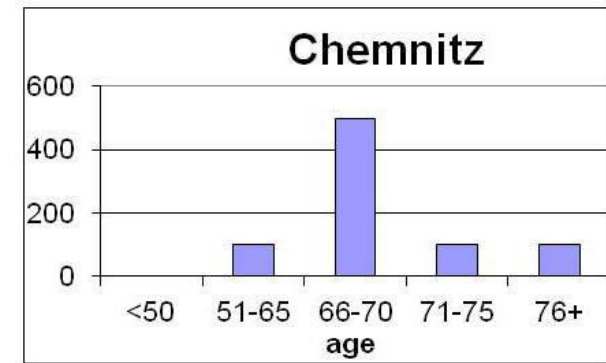
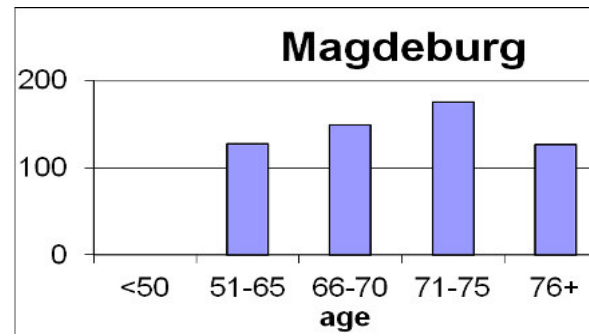
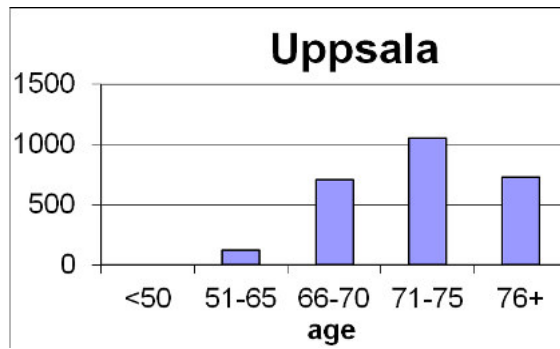
| | < =50 | 51 - 65 | 66 - 70 | 71 - 75 | 76+ |
|------------------|-----------------|----------------|----------------|----------------|------------|
| Uppsala | 0 | 120 | 705 | 1050 | 725 |
| Magdeburg | 0 | 127 | 149 | 175 | 126 |
| Chemnitz | 0 | 100 | 500 | 100 | 100 |
| Groningen | 4 | 869 | 1285 | 679 | 615 |
| Alicante | 10 | 581 | 384 | 200 | 125 |
| Dresden | 5 | 152 | 176 | 246 | 172 |
| Berlin | 20 | 60 | 300 | 80 | 40 |

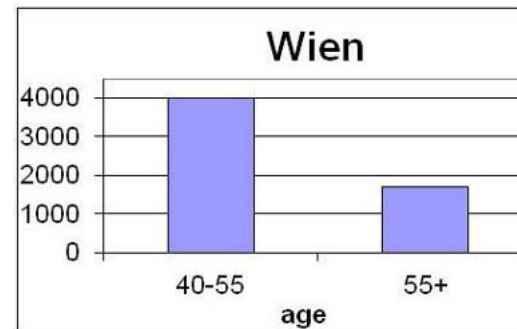
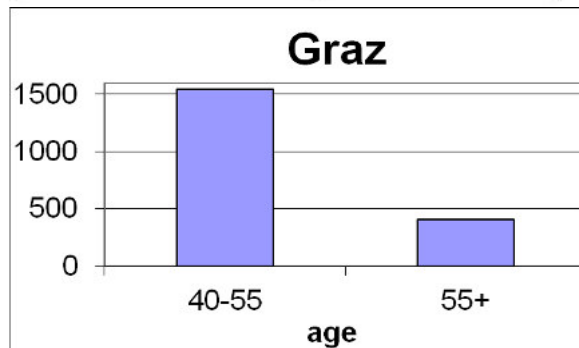
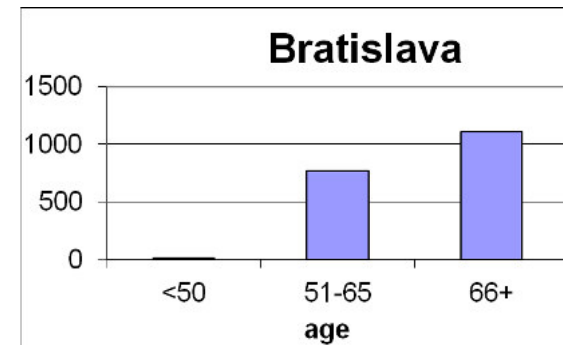
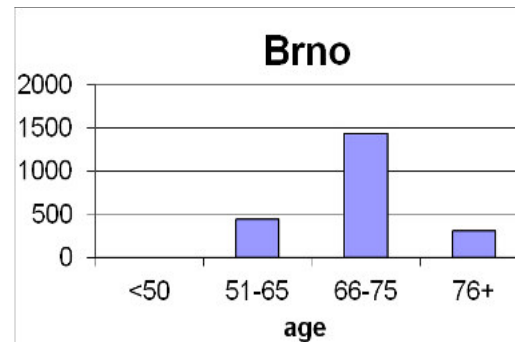
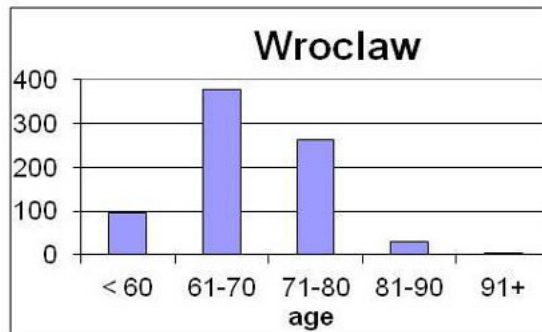
| | < =60 | 61-70 | 71-80 | 81-90 | 91+ |
|----------------|-----------------|--------------|--------------|--------------|------------|
| Wroclaw | 95 | 379 | 263 | 31 | 3 |

| | < =50 | 51 - 65 | 66 - 75 | 76+ |
|-------------|-----------------|----------------|----------------|------------|
| Brno | 0 | 438 | 1431 | 311 |

| | <= 50 | 51 - 65 | 66+ |
|-------------------|-----------------|----------------|------------|
| Bratislava | 10 | 772 | 1105 |

| | 40 - 55 | 55+ |
|-------------|----------------|------------|
| Graz | 1541 | 406 |
| Wien | 3987 | 1691 |





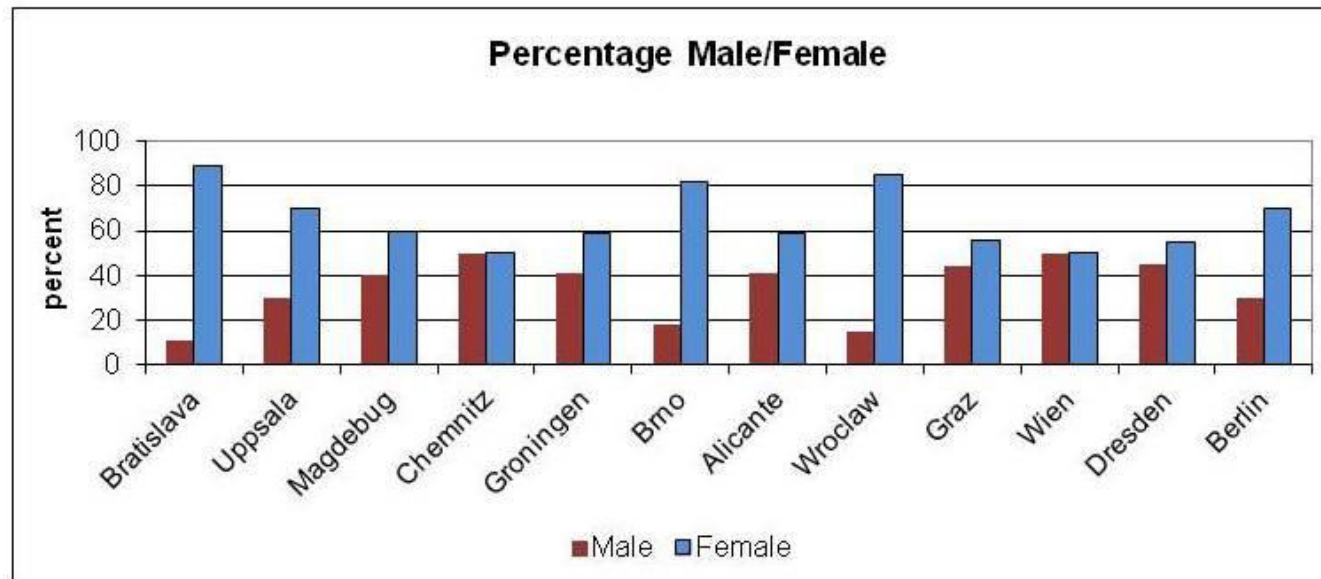
- In most of the institutes the peak lies between 66 and 75 years. The remarkable exceptions are Alicante on the one hand with a notably younger population (peak 51-65 years) and Magdeburg and Dresden on the other side with a notably older population (peak 71-75 years).
- Graz and Wien clearly have a different population of senior students, with the majority below the age of 65.
- Some institutes used different age intervals, making a direct comparison difficult.

Question 8

Percentage Male/Female

| | <i>Slovakia</i> | <i>Sweden</i> | <i>Germany</i> | | <i>Netherlands</i> | <i>Czech Republic</i> | <i>Spain</i> |
|---------------|-------------------|----------------|------------------|-----------------|--------------------|-----------------------|-----------------|
| | Bratislava | Uppsala | Magdeburg | Chemnitz | Groningen | Brno | Alicante |
| Male | 11 | 30 | 40 | 50 | 41 | 18 | 41 |
| Female | 89 | 70 | 60 | 50 | 59 | 82 | 59 |

| | <i>Poland</i> | <i>Austria</i> | | <i>Germany</i> | |
|---------------|----------------|----------------|-------------|----------------|---------------|
| | Wroclaw | Graz | Wien | Dresden | Berlin |
| Male | 15 | 44 | 50 | 45 | 30 |
| Female | 85 | 56 | 50 | 55 | 70 |



- Everywhere there are more females than males. Chemnitz is the exception with a 50/50 distribution, but this might be a mere estimate.
- In Bratislava, Brno and Wroclaw the differences are the biggest.

Questions 9 to 11

| | <i>Slovakia</i> | <i>Sweden</i> | <i>Germany</i> | | <i>Netherlands</i> | <i>Czech Republic</i> | <i>Spain</i> |
|------------------------------------|--|--|---|--|----------------------|---|--|
| | Bratislava | Uppsala | Magdeburg | Chemnitz | Groningen | Brno | Alicante |
| Pre-qualifications required | secondary education | None | None | None | None | secondary education | none |
| Duration of study/ Course | 2-3 years | no time limit | 1 semester | 1 semester | 5-10 weeks | 1 semester/ 2 semester | Free choice by annual offer |
| Cost , fees Contributions | € 75,- working people € 65,- Retirees per year: (2 semesters) | €25,- plus €30-80 per semester for lectures series and work groups | € 50,- per semester. For special courses € 10-25 Max. € 50 | 35 € for semester lectures , Courses PC 30€ | € 102-202 per course | € 14-33 depending on the type of course | 65 € per course. Each course 40 hours |

| | <i>Poland</i> | <i>Austria</i> | | <i>Germany</i> | |
|------------------------------------|---|---|--|-------------------------------|------------------------------------|
| | Wroclaw | Graz | Wien | Dresden | Berlin |
| Pre-qualifications required | none | University level | Abitur, university entrance exam | None | None |
| Duration of study/ Course | None (it could be up to the end of the life) | Up to 8 semesters, according to the specific studies leading to BA and MA | according to the discipline of study, 8-12 semesters | free choice by semester offer | 1 semester Sommeruni 1 week |

| | | | | | |
|----------------------------------|----------------------------|---------------------|---------------------|---------------------|--------------------|
| Cost , fees Contributions | 100 zł.(ca. € 25) per year | € 18,- per semester | € 20,- per semester | € 40,- per semester | € 50 for Sommeruni |
|----------------------------------|----------------------------|---------------------|---------------------|---------------------|--------------------|

- At most places the education for older people is open to everybody (exception: Brno, Bratislava)
- Since the senior students in Austria attend regular studies at the universities they must have the respective pre-qualifications
- The costs are the lowest in Austria and the highest in Groningen. They differ by a factor 10.

Section C

Question 12

Types of studies *

| | <i>Slovakia</i> | <i>Sweden</i> | <i>Germany</i> | | <i>Netherlands</i> | <i>Czech Republic</i> | <i>Spain</i> |
|------------------------------|----------------------|----------------|----------------------|-----------------|--------------------|-----------------------|-----------------|
| | Bratislava | Uppsala | Magdeburg | Chemnitz | Groningen | Brno | Alicante |
| Formal / non-formal | non-formal | non-formal | non-formal | non-formal | non-formal | non-formal | non-formal |
| Integrated / separate | integrated, separate | separate | integrated, separate | integrated | separate | separate | separate |

| | <i>Poland</i> | <i>Austria</i> | | <i>Germany</i> | |
|------------------------------|----------------|----------------|---------------------|----------------|---------------|
| | Wroclaw | Graz | Wien | Dresden | Berlin |
| Formal / non-formal | non-formal | formal | formal, non-formal, | non-formal | non-formal |
| Integrated / separate | separate | integrated | integrated | integrated | separate |

- * *formal* = education certified by the government, with diploma and/or academic title
informal = education not certified by government, e.g. attendance at university lectures without formal exam; special courses or studies for seniors

- integrated* = younger and older students study together
separate = special studies for older students

- Only in Austria formal studies at the university are listed under education for older people.
- The separated education is slightly favoured.

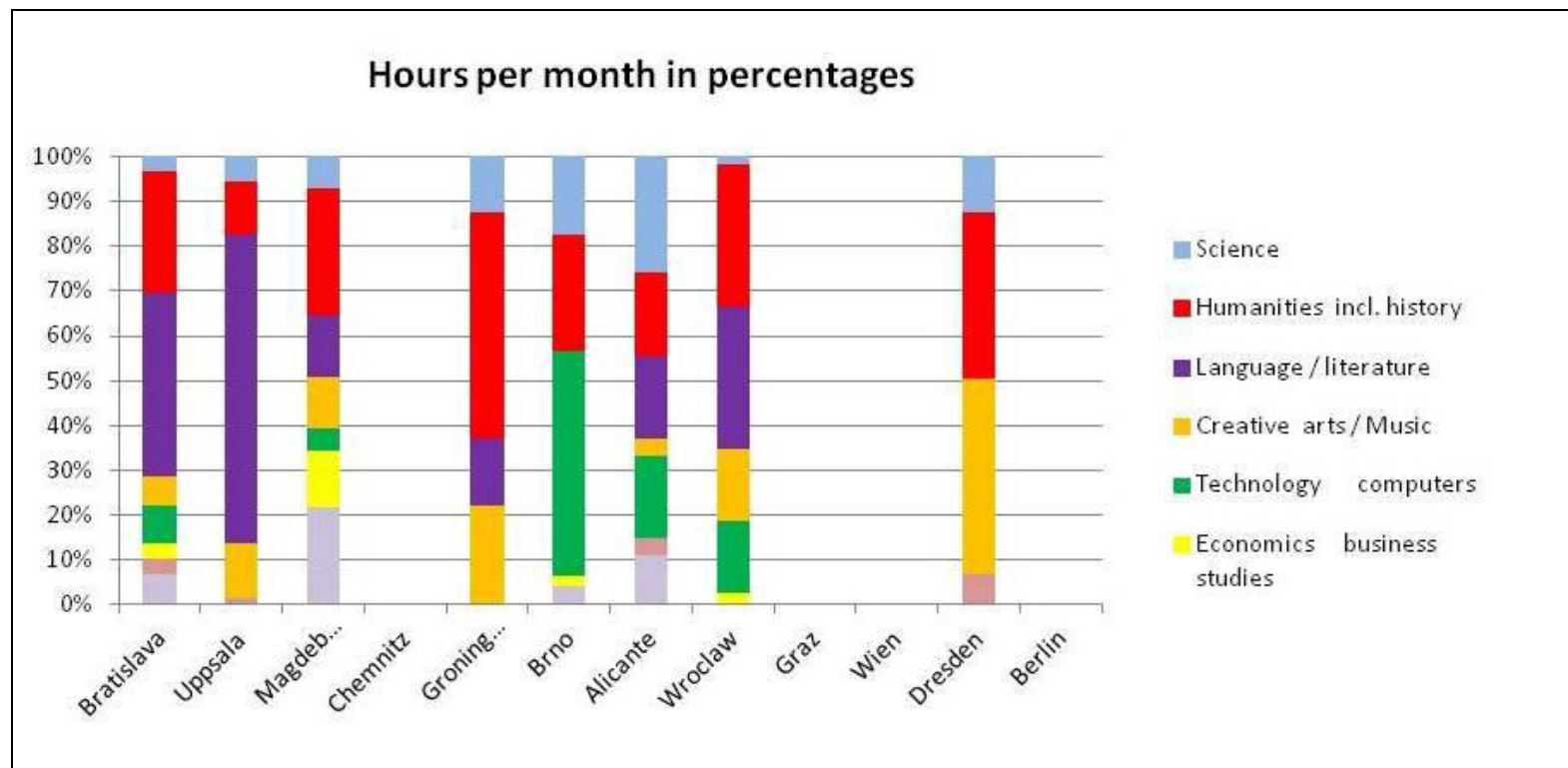
Question 13 Subject areas

Hours per month

| | <i>Slovakia</i> | <i>Sweden</i> | <i>Germany</i> | | <i>Netherlands</i> | <i>Czech Republic</i> | <i>Spain</i> |
|---|-------------------|----------------|------------------|-----------------|--------------------|-----------------------|-----------------|
| | Bratislava | Uppsala | Magdeburg | Chemnitz | Groningen | Brno | Alicante |
| Science | 8 | 28 | 70 | x | 37 | 32 | 280 |
| Humanities incl. history | 64 | 60 | 280 | x | 152 | 48 | 200 |
| Language / literature | 96 | 344 | 136 | x | 45 | | 200 |
| Creative arts / Music | 16 | 60 | 112 | x | 66 | | 40 |
| Technology computers | 20 | | 50 | x | | 92 | 200 |
| Economics business studies | 8 | | 125 | x | | 4 | 0 |
| Medicine | 8 | 8 | 2 | | | | 40 |
| Physical/ mental training | 16 | | 214 | | | 8 | 120 |
| <u>others:</u> | | | | | | | |
| Methodology | | | | | | | |
| Creativity training | 8 | | | | | | |
| Sightseeing+ History | 20 | 30 | 52 | | | | |

| | | | | | | | |
|---------------------------|----|---|--|--|--|--|--|
| UNESCO, Museologie | 8 | | | | | | |
| Company skills | 1 | | | | | | |
| Society | 4 | | | | | | |
| General class | 12 | 4 | | | | | |

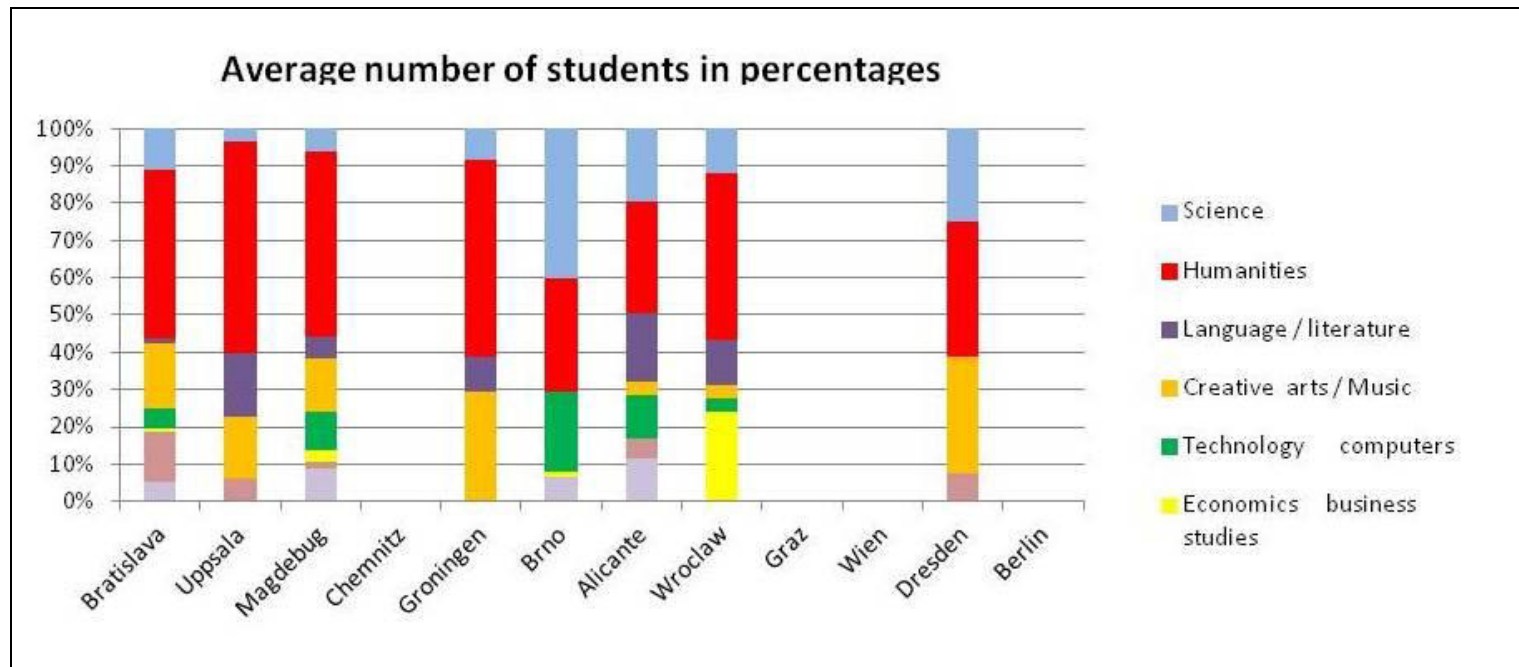
| | <i>Poland</i> | <i>Austria</i> | | <i>Germany</i> | |
|-----------------------------------|----------------|----------------|-------------|----------------|---------------|
| | Wroclaw | Graz | Wien | Dresden | Berlin |
| Science | 6 | | x | 11 | |
| Humanities incl. history | 120 | | x | 33 | |
| Language / literature | 120 | | x | | |
| Creative arts / Music | 60 | | x | 39 | |
| Technology computers | 60 | | | | |
| Economics business studies | 10 | | | | |
| Medicine | x | | | 6 | |
| Physical/ mental training | x | | | | |
| <u>others:</u> | | | | | |
| Methodologie | x | | | | |
| Creativity training | x | | | | |
| Sightseeing+ History | | | | | |
| UNESCO, Museologie | | | | | |
| Company skills | | | | | |
| Society | | | | 20 | |
| General class | | | | | |



Average number of students per month

| | <i>Slovakia</i> | <i>Sweden</i> | <i>Germany</i> | | <i>Netherlands</i> | <i>Czech Republic</i> | <i>Spain</i> |
|---|-------------------|----------------|------------------|-----------------|--------------------|-----------------------|-----------------|
| | Bratislava | Uppsala | Magdeburg | Chemnitz | Groningen | Brno | Alicante |
| Science | 136 | 112 | 187 | x | 105 | 456 | 138 |
| Humanities incl. history | 565 | 1850 | 1527 | x | 650 | 345 | 215 |
| Language / literature | 19 | 556 | 175 | x | 115 | | 129 |
| Creative arts / Music | 220 | 550 | 449 | x | 360 | | 25 |
| Technology computers | 62 | | 318 | x | | 244 | 84 |
| Economics business studies | 15 | | 95 | x | | 19 | 0 |
| Medicine | 166 | 195 | 48 | | | | 39 |
| Physical/ mental training | 66 | | 273 | | | 73 | 81 |
| <u>others:</u> | | | | | | | |
| Methodologie | | | | | | | |
| Creativity training | 21 | | | | | | |
| Sightseeing+ History | 88 | 120 | 666 | | | | |
| UNESCO, Museologie | 90 | | | | | | |
| Company skills | 11 | | | | | | |
| Society | 42 | | | | | | |
| General class | 294 | 450 | | | | | |

| | <i>Poland</i> | <i>Austria</i> | | <i>Germany</i> | |
|---|----------------|----------------|-------------|----------------|---------------|
| | Wroclaw | Graz | Wien | Dresden | Berlin |
| Science | 200 | | x | 245 | |
| Humanities incl. history | 750 | | x | 353 | |
| Language / literature | 200 | | x | | |
| Creative arts / Music | 60 | | x | 308 | |
| Technology computers | 60 | | | | |
| Economics business studies | 400 | | | | |
| Medicine | x | | | 71 | |
| Physical/ mental training | x | | | | |
| <u>others:</u> | | | | | |
| Methodology | x | | | | |
| Creativity training | x | | | | |
| Sightseeing+ History | | | | | |
| UNESCO, Museologie | | | | | |
| Company skills | | | | | |
| Society | | | | 133 | |
| General class | | | | | |



Analysis:

- Everywhere humanities are well represented. At Technical Universities natural sciences play a more dominant role than at general universities.
- Graz, Wien and Chemnitz could not answer.
- Probably, most of the respondents had to apply some mathematical tricks to produce the requested values

Question 14 Learning and Teaching

| | <i>Slovakia</i> | <i>Sweden</i> | <i>Germany</i> | | <i>Netherlands</i> | <i>Czech Republic</i> | <i>Spain</i> |
|------------------------------|-------------------|----------------|------------------|-----------------|--------------------|-----------------------|-----------------|
| | Bratislava | Uppsala | Magdeburg | Chemnitz | Groningen | Brno | Alicante |
| lectures | Reg | Reg | Reg | Reg | Reg | Reg | Reg |
| workshops / seminars | Rare | Reg | Reg | Reg | Occ | Rare | Reg |
| debates/discussions | Occ | Occ | Reg | Occ | | Rare | Reg |
| excursions | Reg | Occ | Reg | Occ | Rare | Rare | Reg |
| student activities | Rare | Reg | Reg | Occ | | | Reg |
| research | Occ | Occ | Occ | Rare | Rare | Rare | Reg |
| activities with young people | Rare | Rare | Occ | Occ | | | Reg |
| act. with local community | Reg | Occ | Occ | Occ | | | Reg |
| intern. col-laboration | Reg | Reg | Reg | Occ | Reg | | Reg |

| | <i>Poland</i> | <i>Austria</i> | | <i>Germany</i> | |
|----------------------|----------------|----------------|-------------|----------------|---------------|
| | Wroclaw | Graz | Wien | Dresden | Berlin |
| lectures | | | Occ | Reg | Reg |
| workshops / seminars | | | Reg | Reg | |
| debates/discussions | | | | Reg | Reg |
| excursions | | | Rare | Reg | |
| student activities | | | Rare | Reg | |
| research | | | | Rare | |

| | | | | | |
|------------------------------|--|-----|-----|------|--|
| activities with young people | | Reg | Reg | Rare | |
| act. with local community | | | | Reg | |
| intern. col-laboration | | | | Reg | |

Reg = regularly
Occ = occasionally
Rare = rarely

- Lectures and workshops are most common
- Activities with young people (intergenerational) aren't popular
- Most of the respondents offer an educational programme with a great variety learning and teaching methods.

Question 15 Certificates awarded

| | <i>Slovakia</i> | <i>Sweden</i> | <i>Germany</i> | | <i>Netherlands</i> | <i>Czech Republic</i> | <i>Spain</i> |
|------------------|-------------------|----------------|------------------|-----------------|--------------------|-----------------------|-----------------|
| | Bratislava | Uppsala | Magdeburg | Chemnitz | Groningen | Brno | Alicante |
| None | | x | x | x | x | | |
| Up to 50% | | | | | | x | |
| 50-100% | x | | | | | | x |

| | <i>Poland</i> | <i>Austria</i> | | <i>Germany</i> | |
|------------------|----------------|----------------|-------------|----------------|---------------|
| | Wroclaw | Graz | Wien | Dresden | Berlin |
| None | x | | | x | x |
| Up to 50% | | | x | | |
| 50-100% | | x | | | |

- Certificates are not a common instrument among the respondents. Graz, Wien, Brno, Bratislava and Alicante are the exceptions
- In Graz and Wien, where senior students attend regular studies, a completed study leads to a degree.
- Brno, Bratislava and Alicante issue certificates for special courses for seniors

14-5-15
Peter Hug